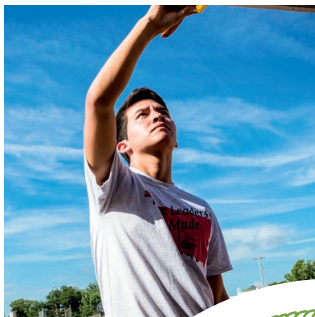


..... *The Chickasaw Nation* .....

# PROGRESS REPORT



20



15







# CONTENTS

---



- 1 WELCOME
- 2 EXECUTIVE LEADERSHIP
- 4 CHILDREN & YOUTH
- 8 COMMERCE
- 12 COMMUNITY
- 16 CULTURE & ARTS
- 20 DEVELOPMENT
- 22 EDUCATION
- 26 ELDERS
- 30 FAMILY
- 34 GOVERNMENT
- 36 HEALTH & WELLNESS
- 40 HOUSING
- 44 FINANCIALS





# Chokma!



The Chickasaw Nation is excited to report another productive fiscal year in 2014 - 2015. It was a year filled with valuable progress in all areas of the tribe.

We appreciate the growth and development that was accomplished during the past fiscal year. Those accomplishments were made

while remaining fiscally responsible in adhering to our mission of enhancing the overall quality of life of Chickasaw citizens. This progress is outlined in the following pages.

Our successful growth is a direct result of the hard work of dedicated employees, all of which have allowed the tribe to offer new or improved opportunities for all Chickasaws each year.

It is an exciting time for the Chickasaw Nation, and we will continue to work toward an even brighter future.



Sincerely,

*Bill Anoatubby*

Bill Anoatubby, Governor  
The Chickasaw Nation



# EXECUTIVE LEADERSHIP

STANDING, LEFT TO RIGHT:

**BILL ANOATUBBY**, Governor

**ROBYN ELLIOTT**, Secretary of Communications & Community Development

As the secretary of communications and community development, Robyn Elliott strives to promote cultural pride among Chickasaw people by sharing timely and important information with the world through various media outlets.

**BILL LANCE**, Secretary of Commerce

Bill Lance is the secretary of commerce. He oversees the many diverse businesses that are operated by the Chickasaw Nation. These businesses provide funding for the programs and services available to the Chickasaw people.

**WAYNE SCRIBNER**, Secretary of Community Services

As the secretary of community services, Wayne Scribner oversees tribal housing, youth services, education, social services and aging programs to ensure quality services for Chickasaw people and the communities in which they live. He is also responsible for the construction of tribal facilities.

**HOLLY EASTERLING**, Secretary of Treasury

Secretary of treasury, Holly Easterling, provides pertinent and vital information to managers and leaders to assist in key financial decisions, long-term strategic planning and management

of assets and investments across the Chickasaw Nation.

**JAY KEEL**, Secretary of Family Services

Jay Keel is the secretary of family services. This department provides programs and opportunities that support strong and healthy Chickasaw families.

SEATED, LEFT TO RIGHT:

**JALINDA KELLEY**, Secretary of Interior Services

As the secretary of interior services, Jalinda Kelley is responsible for many of the internal operations of the Chickasaw Nation. Some of these services include Lighthorse Police, human resources, benefits and compensation, training and career development and tribal government services.

**DR. JUDY GOFORTH PARKER**, Secretary of Health

As secretary of health, Dr. Judy Goforth Parker oversees the Chickasaw Nation Medical Center and is responsible for health programs and services offered to Chickasaw people.

**LISA JOHN**, Secretary of Culture & Humanities

As the secretary of culture and humanities, Lisa John is responsible for the Chickasaw Cultural Center and the development of programs to encourage cultural education, historical preservation and the arts.

**TAMMY GRAY**, Executive Officer, Governor's Office





**BOTTOM ROW, LEFT TO RIGHT:**

- ROSS HILL**, Bank2 (P)
  - ANGELA CONNOR**, Family Support (EO)
  - JOHNNA WALKER**, Chickasaw Foundation (CEO)
  - DAN BOREN**, Corporate Development (P)
  - MENDY WATKINS**, Budgeting & Support (EO)
  - LETA BURWELL**, Social Services (EO)
  - LONA BARRICK**, Cultural Tourism (EO)
  - CHRISTY ESTES**, Finance, HQ (EO)
  - PAULINE SLIGER**, Compensation (EO)
  - DEBRA GEE**, Legal, HQ (EO)
  - TENA JOLLEY**, Benefits (EO)
  - JANA REICH**, Accounting (EO)
  - JENNIFER KANESHIRO**, Administrative Services (US)
  - BRENDA TEEL**, Revenue & Purchased Care (EO)
- SECOND ROW, LEFT TO RIGHT:**
- CHRIS THARP**, Tribal & Commercial Health (EO)
  - KARISSA PICKETT**, Creative Services (EO)
  - KARA BERST**, Environmental Health & Safety (EO)
  - DAVID NIMMO**, Chickasaw Nation Industries, Inc. (P)
  - DANNY WELLS**, Education (EO)
  - JUAN RICO**, Operations (US)
  - HEATHER SUMMERS**, Operations, Hospitals & Clinics (US)
  - ANDREA HORNER**, Marketing (EO)
  - LAURA STEWART**, Arts & Humanities (EO)
  - CYNDIE KEY**, Human Resources, HQ (EO)
  - BOBBY JONES**, Human Resources, Commerce (EO)
  - SHEILLA BRASHIER**, Community Outreach & Development (EO)
  - CARRIE LAW**, Hospital & Clinical Excellence (EO)
  - UDAY RAO**, Information Technology (EO)
  - VALORIE WALTERS**, Cultural Center (EO)
  - MARTY WAFFORD**, Support & Programs (US)
- THIRD ROW, LEFT TO RIGHT:**
- JERRY JONES**, Audit & Financial Reporting (EO/Sr. Advisor)
  - DEBBIE JACKSON**, Chikasha House/Patient Resources (EO)
  - TIM RHYNES**, Organizational Planning & Support (EO)
  - BECKY CHANDLER**, Communications (EO)
  - CHRIS ANOATUBBY**, Tribal & Commercial Health (US)
  - COLT DIGBY**, Youth Services (EO)

- RENEE SWEET**, Housing (EO)
- JENNY TRETT**, Tribal & Commercial Health Administration (EO)
- CAROL MCCURDY**, Training & Career Development (EO)
- JIMMY TIGNOR**, Support (EO)
- SHERYL GOODSON**, Satellite Clinics (EO)
- LAURA NICKELL**, CNMS Clinics (EO)
- KAREN COOK**, Aging (EO)
- KAY WYNN**, Internal Audit (EO)
- DR. SHANNON DIAL**, Integrated Services (EO)
- C.J. ADUCCI**, Strong Family Development (EO)

**FOURTH ROW, LEFT TO RIGHT:**

- KENNETH ROSS**, Solara Surgical Partners (P)
- JONATHAN MOFFAT**, Digital Design & Development (EO)
- MARK HICKS**, Tribal Procurement (EO)
- JANA HARRISON**, Housing Finance (EO)
- ADAM STAFFORD**, Business Analytics (EO)
- PALMER MOSLEY**, Self-Determination (EO)
- JOHN ELLIS**, Construction & Support Services (EO)
- DAKOTA COLE**, Treasury (US)
- CLIFF AGEE**, Subsidiary Services & Support (US)
- PAT NEELEY**, Business Affairs (US)
- JEROD WATERS**, Nursing (EO)
- DR. PAUL EMRICH**, Mental Health Services (US)
- SCOTT EMERSON**, Gaming & Retail Operations (EO)
- TODD CRAWFORD**, Residential Services (EO)
- TONY CHOATE**, Media Relations (EO)
- PHILLIP PERKINS**, Protective Services (EO)
- KEN SMITH**, Construction (EO)

**NOT PICTURED:**

- CLINT CHADWICK**, Operations (EO)
- MELISSA EDGAR**, Program Development & Review (EO)
- STEPHEN GREETHAM**, Legal, Commerce (EO)
- LORI HAMILTON**, History & Culture (EO)
- TOM JOHN**, Community Services (US)
- FRANK JOHNSON, JR.**, Governmental Affairs (EO)
- CHENAE LIPPARD**, Heritage Preservation (EO)
- NEAL MCCAULEB**, Ambassador at Large
- KIRK PERRY**, Historic Preservation (EO)
- BRAD PREWITT**, Inkana Foundation (EO)

(CEO) - Chief Executive Officer

(EO) - Executive Officer

(US) - Under Secretaries

(P) - President

# CHILDREN & YOUTH



The child care assistance programs partnered with **63** child care providers within the Chickasaw Nation to supplement child care payments for **553** children. The program also awarded **57** grants for use in improving child care facilities.

The Sick Child Care Center, which assists children with mild health issues, provided care on **1,097** occasions to **219** children.

The Chickasaw Nation Child Development Center provided year-round care to **217** children between the ages of 6 weeks and 4 years.

The tribe partnered with Smart Start, Oklahoma DHS and OK Safe Kids to provide **248** car seat checks and **62** new car seats.

The Bright Smiles, Bright Future dental program distributed toothbrushes and toothpaste to all early childhood education center students three times during the school year, distributing nearly **1,000** toothbrushes and toothpaste.

The martial arts program served **218** Chickasaw youth in FY 2015 at five locations throughout the Chickasaw Nation.

“Chikasha Pehlichikbi taught me that a leader is a person who takes charge, but doesn’t hold anyone down. A leader is someone who you can gain insight and inspiration from their actions. I’m thankful for the opportunities and people I have met through this organization.”  
-CHICKASAW CITIZEN TRISTIN LACKEY

In 2015, the Foster Grandparent program was announced. The program allows Chickasaw elders to assist and mentor Chickasaw children in a one-on-one capacity.

The after school and school age programs provided care to **355** children, ages 4 through 12, after regular school hours and during public school holiday breaks.

The resource and referral program provided training to **241** early childhood teachers, assistance providers and parents of young children.

In 2015, more than **2,600** Chickasaw youth from across the country participated in camps, clinics and academies offered by the tribe.

The tribe’s numerous recreational programs served more than **4,400** Chickasaw youth through a variety of leagues, including basketball and volleyball.

Chickasaw Youth Clubs, formerly Boys and Girls Clubs, in Tishomingo and Sulphur combined to serve **209** Chickasaw youth.



The Chikasha Pehlichik Ikb (Creating Chickasaw Leaders) program served **2,550** Chickasaw high school students by engaging in various educational and cultural sessions and promoting interaction between Chickasaw students who live across the Chickasaw Nation.

Select Chikasha Pehlichik Ikb students had the opportunity to represent the Chickasaw Nation at the first ever White House Tribal Youth Gathering in Washington, D.C., where they heard from first lady Michelle Obama and met with congressman Tom Cole.

The Pomiksa Chikasha (My Chickasaw Clan) program offered opportunities, including participation in tribal camps, clinics and youth programs, to eligible non-Chickasaw children being raised in Chickasaw households.

**Forty-eight** students from around the country attended Chickasaw Nation Aviation and Space

Academy, which encourages students to pursue opportunities in aviation, space, science and math.

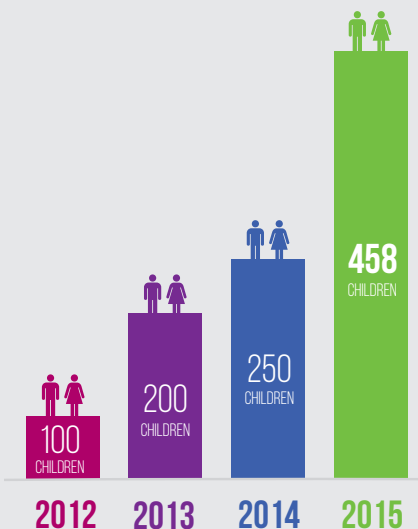
**Thirty-six** Chickasaw students attended the Space Academy at the U.S. Rocket & Space Center in Huntsville, Alabama, where they participated in simulations of astronaut activities, among other activities.



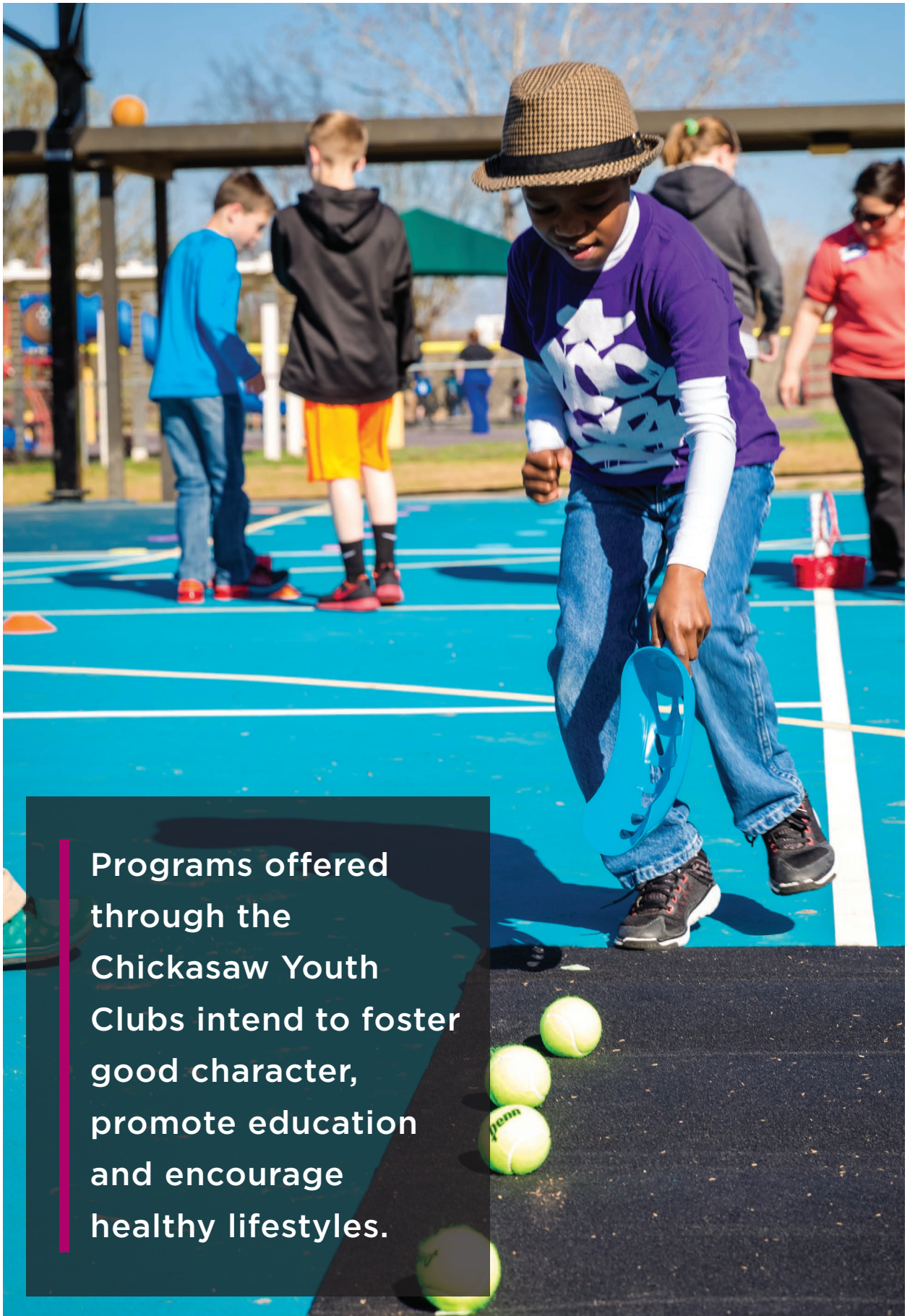
THE CHICKASAW NATION PROVIDED ASSISTANCE FOR **1,827** CHICKASAW YOUTH TO PARTICIPATE IN VARIOUS EVENTS, CLUBS, LEAGUES OR OTHER AREAS OF INTEREST.



THE TRIBE'S YOUTH CLOTHING GRANT PROVIDED **13,623** CHICKASAW STUDENTS WITH A \$200 GIFT CARD FOR THE PURCHASE OF SCHOOL CLOTHING.



THE EARLY INTERVENTION PROGRAM, WHICH FOCUSES ON THE SOCIAL, EMOTIONAL AND COGNITIVE DEVELOPMENT OF CHILDREN, ASSESSED **458** CHILDREN IN 2015.



Programs offered through the Chickasaw Youth Clubs intend to foster good character, promote education and encourage healthy lifestyles.





IN MAY 2015, THE TRIBE BROKE  
GROUND ON A NEW **CHICKASAW**  
**YOUTH CLUB** IN SULPHUR.





# COMMERCE

The Chickasaw Nation Preferred Vendor Program creates opportunities for Chickasaw-owned businesses to grow along with the tribe. The program currently has more than **200** Chickasaw-owned businesses registered.

Ground was broken on the new WinStar Convention Center, a **65,000** square-foot facility, in April 2015.

A major expansion of the Newcastle Casino began in 2015 to improve efficiency and customer experience. The expansion includes additional parking, shuttles and **738** electronic games.

Bedré Chocolate was accepted into the Made in Oklahoma Coalition in 2015, which promotes awareness and loyalty for Oklahoma-made products.

Bank2 has the largest Native American home mortgage portfolio in the country. In 2015, the bank provided major housing financing for individuals and tribes across the country.

Bank2 was named one of Oklahoma's Top Places to Work in 2014 and is, once again, the top source of Native American home loans in Oklahoma and a top-three lender nationally.



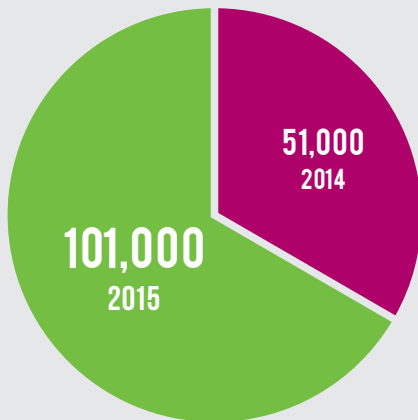


Chickasaw Nation Industries (CNI) entered into two contracts with the Federal Aviation Administration valued at more than **\$90 million** in 2015.

CNI also acquired Corvid Technologies, a one-of-a-kind company specializing in computational physics analysis techniques and cutting-edge hardware to solve complex engineering and scientific challenges.

Sovereign Native Holdco added Walnut Creek Property Investments to its portfolio. Walnut Creek focuses on identifying and capitalizing on real estate opportunities and maximizing the tribe's use of its current property footprint.

Sovereign Operations Holdco, an enterprise of the Chickasaw Nation, purchased First Med Urgent Care and its six urgent care clinics in Oklahoma City and Edmond.



TOTAL GUEST COUNT

THE ARTESIAN HOTEL HAS HAD MORE THAN **101,000** GUESTS SINCE OPENING IN 2013.









**ADVENTURE ROAD**, A TOURISM PARTNERSHIP WITH MORE THAN 180 **OKLAHOMA BUSINESSES**, LAUNCHED TO PROMOTE THE “GREAT AMERICAN ROAD TRIP” ON 130 MILES OF **SOUTH-CENTRAL OKLAHOMA** HIGHWAY.



# COMMUNITY



In May 2015, ground was broken on a new **8,000** square-foot community center in Tishomingo and a new area office in Purcell.

Ground was also broken on the **3,000** square-foot Chickasaw Information Center in Tishomingo to showcase the Chickasaw Nation and all there is to do in Chickasaw Country.

The 2015 Chickasaw Veterans Conference took place at WinStar World Casino, where the Chickasaw Warrior Society was established. More than **250** veterans attended.

The Chickasaw Warrior Society is one step in the mission to fully serve Chickasaw veterans. The society aims to foster the relationships of our servicemen and women to each other as well as the tribe. The Chickasaw Warrior Society

encourages community, establishes and supports camaraderie and personifies the Chickasaw warrior spirit.

Planning and development are underway for the Chickasaw Veterans Lodge to be located near the Chickasaw Nation Medical Center in Ada. The lodge will house veteran services as well as a place for fellowship and comradery.

The roads program improved or repaired **33** miles of roads and bridges in seven Chickasaw counties this year.

The Chickasaw Nation launched official Instagram, [www.Instagram.com/ChickasawNation](http://www.Instagram.com/ChickasawNation), and Periscope accounts to showcase unique tribal photos and videos online.



Nearly **1,600** Thanksgiving baskets and more than **1,800** Christmas baskets were provided for eligible Chickasaw families.

On behalf of the tribe, community health representatives made



“I am grateful for the opportunity to display my citizenship with a Chickasaw Nation license plate. I take a lot of pride in my heritage and having this beautiful license plate helps me feel connected to the tribe as well as to other Chickasaws.”

**-CHICKASAW CITIZEN KRISTEN GILL**

more than **18,600** outreach calls by testing vital signs, providing transportation to appointments and picking up medication.

Nearly **2,000** citizens received support through the tribe’s emergency energy assistance programs for urgent, unmet needs.



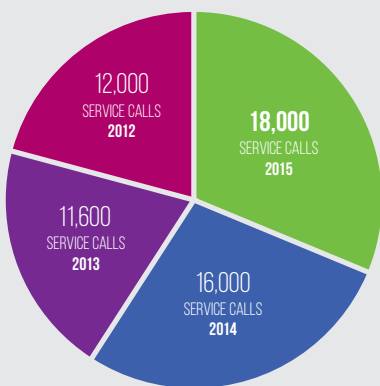
Through a community service block grant, the tribe assisted **111** Chickasaw families in crisis situations with utilities, food and rent.

With the Low Income Home Energy Assistance Program, the tribe supported more than **1,300** low-income families with energy assistance.

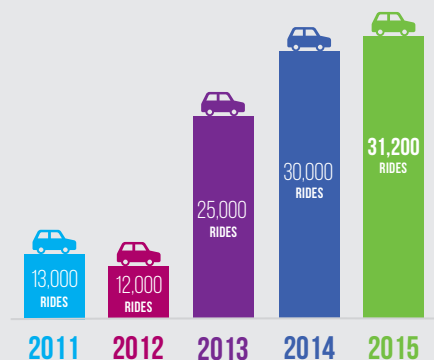
The Chickasaw Princesses served as ambassadors for the tribe at **49** events across the country, bringing honor and pride to the Chickasaw Nation.

The Chickasaw Nation Honor Guard attended more than **1,000** events in 2015.

Lighthorse Police Department routinely provided presentations to Chickasaw Nation communities in hopes of enhancing public safety and social awareness. LPD administered **85** presentations this year.



THE LIGHTHORSE POLICE DEPARTMENT (LPD) OFFICERS RESPONDED TO NEARLY **18,000** SERVICE CALLS FOR COMMUNITY, PREVENTION AND PREMISES INSPECTIONS.



IN 2015, TRANSPORTATION SERVICES PROVIDED MORE THAN **31,200** RIDES FOR CLIENTS TO MEDICAL CLINICS AND THE DELIVERY OF MEDICAL REFILL PRESCRIPTIONS TO HOMEBOUND CITIZENS.



NEARLY **9,000** CHICKASAW NATION LICENSE PLATES HAVE BEEN ISSUED SINCE MAKING A COMPACT WITH THE STATE OF OKLAHOMA, ADDING UP TO MORE THAN **\$380,000 IN REBATES** FOR CHICKASAW CITIZENS WHO PURCHASED THE TAGS.





“I’ve always been proud to be Chickasaw. Now I can showcase it everywhere I go!”

-CHICKASAW CITIZEN AVERY LOGAN





# CULTURE & ARTS



More than **200** students participated in the Chickasaw Arts Academy this year.

The division of arts and humanities partnered with local schools and communities to serve more than **2,500** students with cultural festivals, arts exhibits, workshops and more.

The Chickasaw Nation Youth Choir joined other Native American entertainers, dancers and a Native honor guard in performing the national anthem at Arrowhead Stadium as the Kansas City Chiefs celebrated Native American Heritage Month.

Tourism Destination during The Oklahoman's 22nd annual Reader's Choice Awards.

In July 2015, ground was broken on a footbridge connecting the CCC to the Chickasaw National Recreation Area, two of the area's most popular tourism destinations.

The Chickasaw Press launched two new titles in 2015, *Chikasha: The Chickasaw Collection at the National Museum of the American Indian* and *The Early Chickasaw Homeland: Origins, Boundaries and Society*.

“The Chickasaw Nation Language Department provides valuable tools and resources in revitalizing and preserving the language for the future. It’s through our elders that we have the language and they are a wonderful resource. The more I learned the language, the more I realized, if you learn something you should teach it, you should pass it on.”

**-CHICKASAW CITIZEN MERRY MONROE**

This year's Artesian Arts Festival in Sulphur, Oklahoma, had approximately **5,000** guests who enjoyed art displays, lectures, children's activities, music, food and more.

The Chickasaw Cultural Center (CCC) received multiple awards and honors in 2015, including the Redbud Award for Best Website and for Outstanding Temporary Exhibit, and the Best State

The White Dog Press released two children's book, *C is for Chickasaw*, and *Anompolichi: The Wordmaster*.

In 2015, the Holisso Research Center on the CCC campus helped nearly **11,000** patrons with research, genealogy requests and more.

The tribe's online language resources had more than **13,000** user visits.





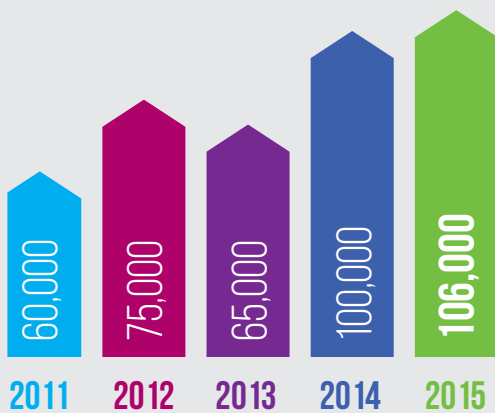
The Johnston County Bank Museum had more than **400** visitors in FY 2015.

The department of homeland affairs partnered with the Universities of Florida and South Carolina to conduct the “Beyond Yaneka” archaeological survey and testing project in Mississippi in search of the 1541 Battle of Chicasa site and related Chickasaw villages.

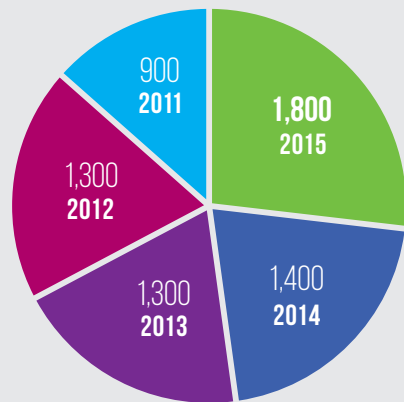
The tribe’s historic preservation department provided work on **925** federally funded projects in the Chickasaw Nation homelands to help assure protection of Chickasaw historic and cultural sites.



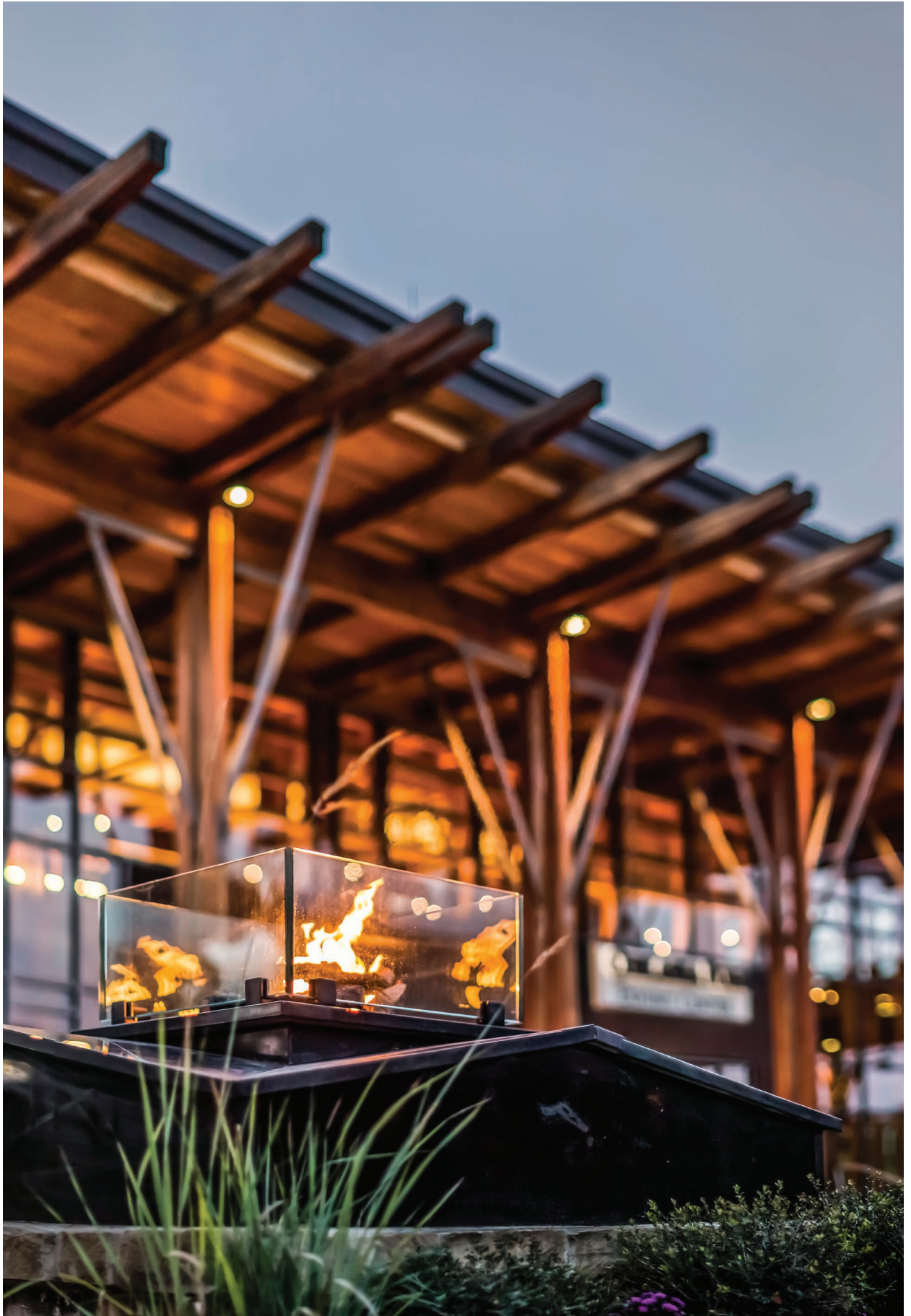
IN FY 2015, THE CHICKASAW COUNCIL HOUSE MUSEUM, NATIONAL CAPITOL MUSEUM, WHITE HOUSE AND BOGGY DEPOT ATTRACTED NEARLY **26,000** VISITORS.



SINCE OPENING IN 2010, MORE THAN **400,000** GUESTS FROM AROUND THE WORLD HAVE VISITED THE CHICKASAW CULTURAL CENTER.



THE LANGUAGE DEPARTMENT HAD MORE THAN **1,800** PARTICIPANTS AT VARIOUS CLASSES, CAMPS, CLUBS AND OUTREACH VISITS.





THE **CHICKASAW CULTURAL CENTER** CELEBRATED ITS **FIVE-YEAR ANNIVERSARY** IN 2015. MORE THAN **406,000 PEOPLE** HAVE VISITED THE CHICKASAW CULTURAL CENTER SINCE ITS OPENING IN 2010.





# DEVELOPMENT

---

TRIBAL DEVELOPMENT PROJECTS REMAIN A PRIORITY. PROGRAMS AND SERVICES CONTINUE TO EXPAND, AND IN MANY CASES, EXISTING FACILITIES NEED SIGNIFICANT UPGRADES. IN FY 2015, THE TRIBE COMPLETED TWO MAJOR PROJECTS AND BEGAN CONSTRUCTION ON SEVERAL NEW FACILITIES.

## COMPLETED PROJECTS IN FY 2015:

### **Thackerville, Oklahoma**

Interstate 35 entrance and exit ramps

### **Madill, Oklahoma**

Chickasaw Senior Center remodel

## PROJECTS UNDER CONSTRUCTION:

### **Ardmore, Oklahoma**

Child Development Center

### **Sulphur, Oklahoma**

Chickasaw Youth Club

### **Purcell, Oklahoma**

Chickasaw Nation Health Clinic expansion  
Chickasaw Nation Wellness Center  
Area Office

### **Tishomingo, Oklahoma**

Chickasaw Information Center  
Chickasaw Community Center  
Chickasaw Senior Center  
Early Childhood Education Center



**PROJECTS IN THE DESIGN STAGES:**

**Ada, Oklahoma:**

Women's Substance Abuse Treatment Center  
Chickasaw Veteran's Lodge

**Thackerville, Oklahoma:**  
WinStar Convention Center

**Sulphur, Oklahoma:**

Chickasaw Cultural Center/Chickasaw  
National Recreation Area Bridge

**Oklahoma City, Oklahoma:**  
Chickasaw Community Center  
Chickasaw Senior Center





# EDUCATION



The Chickasaw Honor Club awarded incentives to **2,403** Chickasaw students for FY 2015 and distributed **9,563** awards for the 2014-2015 school year.

Total enrollment for the Chickasaw Nation's four early childhood education centers, located in Ada, Ardmore, Sulphur and Tishomingo, was **331** students during the 2014-2015 school year.

The Reading is Fundamental program distributed more than **1,900** books to students attending

The Native Explorers program educates students in the areas of earth, natural and biomedical sciences and medicine. This year, more than **100** Chickasaw students attended the program events and trips.

Through the Johnson O'Malley and school supply assistance program, the tribe provided school supplies for more than **9,000** students within the Chickasaw Nation.

The State-Tribal Education Partnership Pilot Program, a partnership with the Oklahoma State

**"I'm grateful for the Career Technology Program for helping me achieve my language and career goals. It has made me capable of representing Chickasaw heritage and serving others abroad."**  
**-CHICKASAW CITIZEN COLBY CORSAUT**

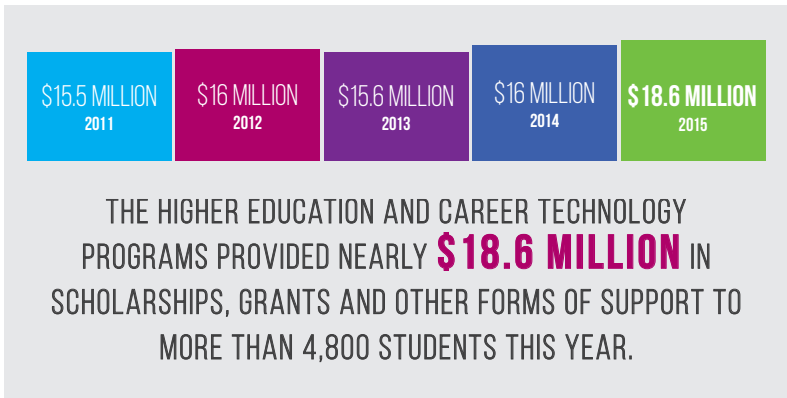
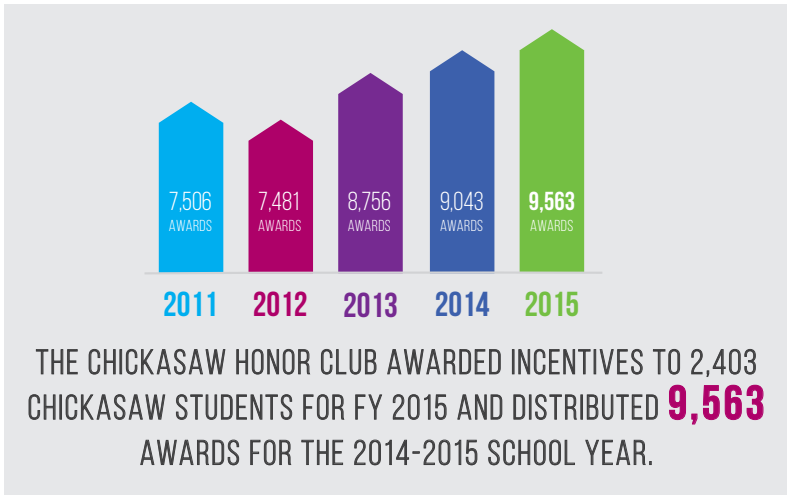
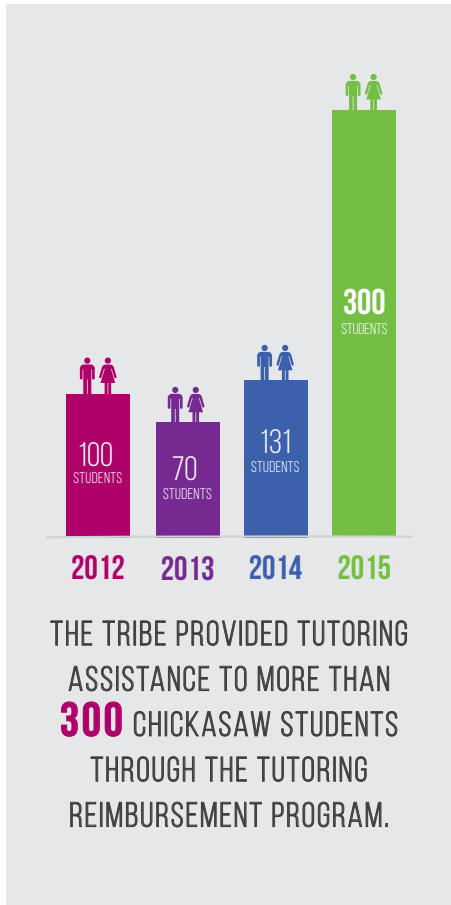
Chickasaw Nation Early Childhood Development and Child Development Centers.

**Four-hundred** Chickasaw children, ages 5 and younger, received a book in the mail each month through a partnership with the Dolly Parton Imagination Library to promote childhood literacy.

Department of Education, has tutored **316** Native American students in the areas of reading and math since the program began in 2013.

**Seventy-nine** students participated in the tribal robotics program to compete in various robotics competitions across the country.





A new science, technology, engineering and math (STEM) program, STEMsearch, was added in FY 2015 to introduce students to STEM-related activities, experiments, software and career options.

Also new, the Crime Scene Investigation program exposed **42** students to forensic science techniques. Students gathered, processed and used data with scientific research to solve problems.

The adult learning program assisted **169** individuals with the goal of completing the High School Equivalency (HSE) certification.

The Chickasaw Nation partnered with Oklahoma State University to launch the Center for Sovereign Nations in Stillwater, Oklahoma. The center promotes understanding, respect and the exercise of tribal sovereignty, while also promoting American Indian student success and graduation.



The new 12,000 square-foot facility will include four classrooms, an indoor play room, safe room and a fenced outdoor playground, as well as a commercial kitchen and large dining room.





IN MAY 2015, GROUND WAS BROKEN ON  
A NEW **EARLY CHILDHOOD EDUCATION  
CENTER** IN TISHOMINGO.





# ELDERS

The Chickasaw Nation has **12** senior centers throughout south-central Oklahoma, located in Achille, Ada, Ardmore, Colbert, Connerville, Duncan, Kullihoma, Madill, Pauls Valley, Purcell,

The elderly energy assistance program provided supplemental utility assistance to more than **4,300** Chickasaw elders during the summer and winter months.

“The Chickasaw Nation supports our elders. I am thankful for all the programs and services offered to us through the division on aging.” **-CHICKASAW ELDER MIKE REED**

Sulphur, Tishomingo and one senior nutrition program in Oklahoma City.

In May 2015, ground was broken on a new senior center in Tishomingo, and details were announced for a new senior center in Oklahoma City.

The elder frozen meal program provides supplemental meals to Chickasaw elders living within the Chickasaw Nation, but outside the senior center homebound delivery route. **Twelve** elders are participating in the new program.

More than **260** elders attended the 2015 Annual Elders Conference.

**Fifteen** Chickasaw elders are participating in the Chickasaw Employment for Seniors program, which provides employment opportunities to elders living in the Chickasaw Nation.

The veterans’ program assisted **330** Chickasaw veterans with burial assistance, benefits and other services.

**Fifty** Chickasaw veterans received a jacket in honor of their military service.

**Fifteen** Chickasaw veterans traveled to Washington, D.C., to visit the WWII National Monument, Arlington National Cemetery, National Museum of the American Indian, the U.S. Capitol and Mount Vernon.



During the annual car care event, the tribe checked auto fluids, tire pressures and wiper blades for **140** elders.

The supplemental wood program provided **686** ricks of wood to **230** Chickasaw elders for winter heating.

The tribe's elderly specialists assisted more than **550** elders with locating resources, completing applications and gathering required documents to obtain services.

The Chickasaw Nation provided nearly **15,000** over-the-counter medications at no cost to Chickasaw elders.

The Iti Apela (Elder Help) program served **54** Chickasaw elders by providing 24-hour medical alert services.

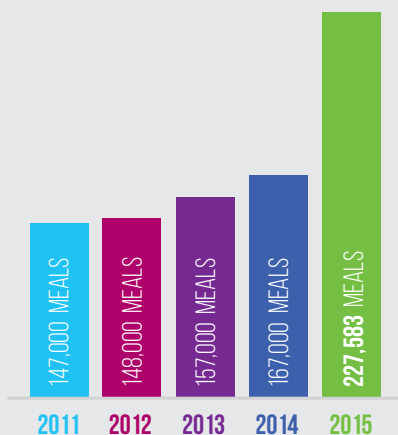
The tribe's assisted living supplement program provided up to \$2,500 per month for **44** Chickasaw elders to live in a state-licensed assisted living facility.

The burial supplement program provided **115** families up to \$2,500 toward funeral expenses for Chickasaw elders.

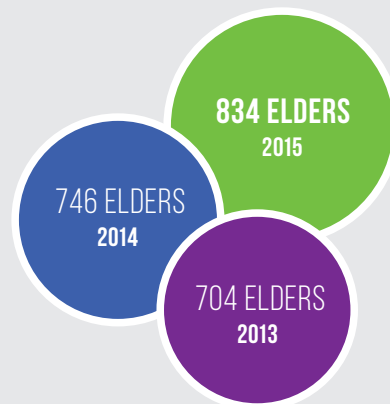
The elders' chore program provided more than **4,000** home cleaning services and staff visitation to long-term care facilities.

The senior companion program began in 2015 to provide a crucial link for Chickasaw elders living alone. Services were provided on **450** occasions.

The Native American Caregiver Support program served **31** individuals caring for Native American elders and Native American elders raising grandchildren.



THE CHICKASAW NATION SENIOR CENTERS PROVIDED **227,583** BALANCED MEALS TO QUALIFIED NATIVE AMERICAN ELDERS IN FY 2015.



THE SUPPLEMENTAL LAWN MOWING PROGRAM PROVIDED SERVICES FOR **834** CHICKASAW ELDERS DURING THE SUMMER MONTHS.



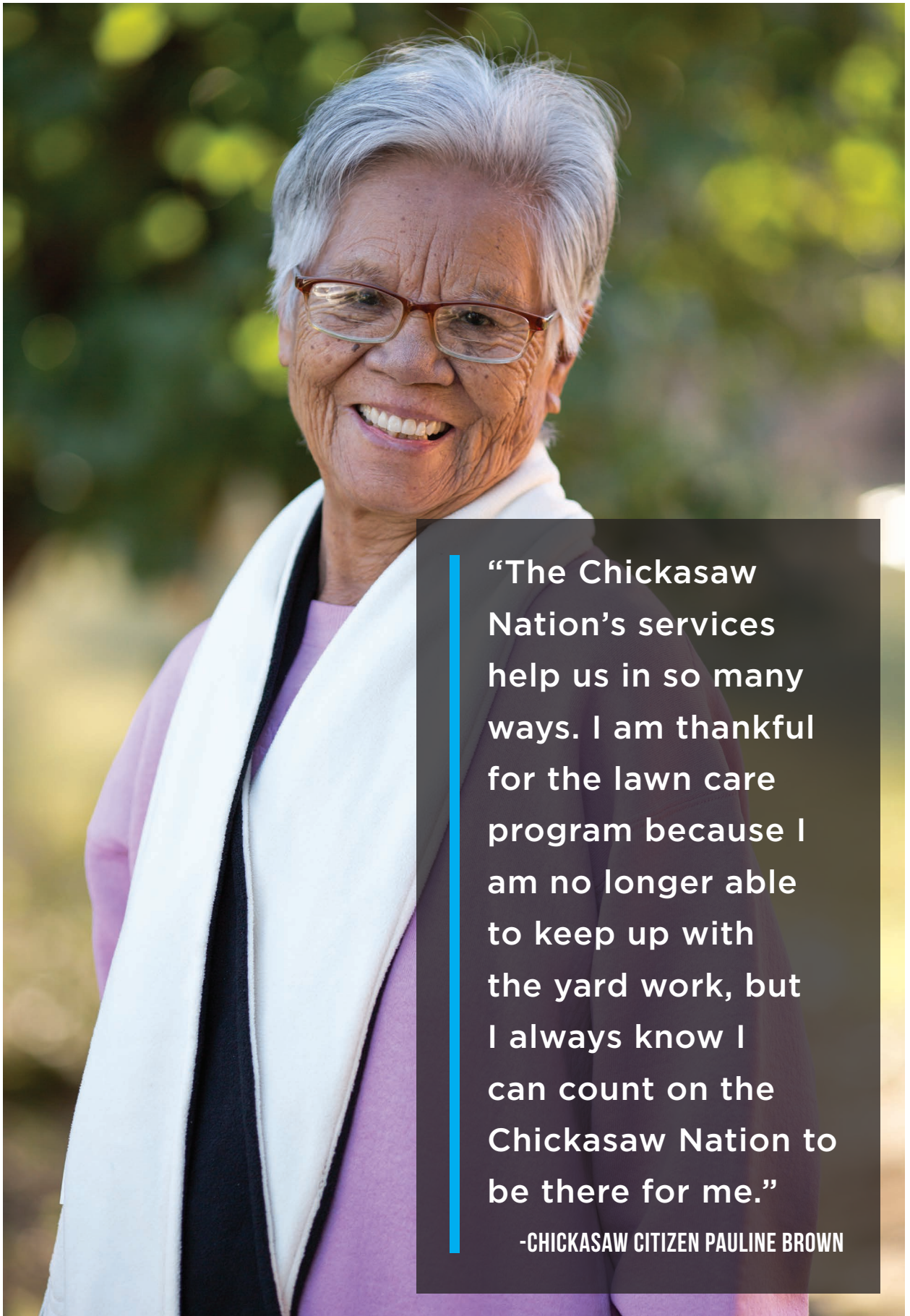
THE WINTER FARMERS' MARKET NUTRITION PROGRAM FOR CHICKASAWS SERVED **2,250** ELDERS WITH FRESH AND FROZEN FRUITS AND VEGETABLES, NOVEMBER THROUGH MARCH.



THE SUPPLEMENTAL **LAWN MOWING PROGRAM** PROVIDED SERVICES FOR **834 CHICKASAW ELDERS** DURING THE SUMMER MONTHS.







“The Chickasaw Nation’s services help us in so many ways. I am thankful for the lawn care program because I am no longer able to keep up with the yard work, but I always know I can count on the Chickasaw Nation to be there for me.”

-CHICKASAW CITIZEN PAULINE BROWN



# FAMILY



On average, **57** students received guidance, encouragement and personal development in a safe, nurturing environment each month at the Chickasaw Children's Village.

The Aalhakoffichí (A Place for Healing) Adolescent Transitional Living Center focuses on providing residents with cultural and life experiences to help them gain self-sufficiency and interpersonal relationship skills. The center averaged **six** participants per month in 2015.

The Chickashaat Ilokchina' (Chickasaw Wellness) program served **84** Native American youth, ages 12 to 22, with therapy, navigation and cultural enhancement.

The tribe's outpatient services program operates seven treatment sites and provided nearly **12,000** hours of service to more than **2,200** clients.

The Chokká Kilimpí (Strong Home) Family Resource Center provides services which are respectful and responsive to the health beliefs, practices and cultural and linguistic needs of Chickasaw families.

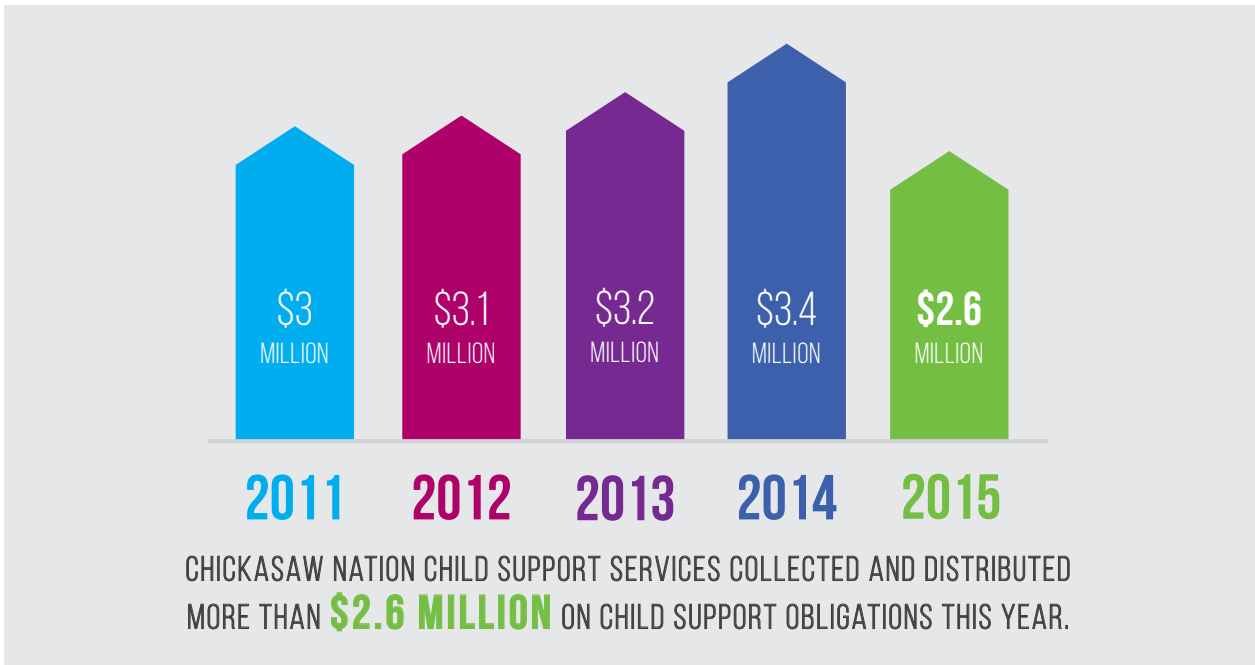
The medical family therapy program focuses treatment activities in a holistic and collaborative way. In FY 2015, the program had nearly **5,000** client activities.

Through the tobacco prevention/MPOWER grant, an estimated **660** individuals were impacted by awareness and activities regarding the dangers of tobacco use.

Through the methamphetamine and suicide prevention initiative grant, more than **3,500** individuals were reached regarding awareness and

"I am so appreciative of the program. I didn't want to be here when I first came, but after staying for a month and a half that all changed for me. I realized I needed to change my life." -ANONYMOUS CHICKASAW CITIZEN ON THERAPEUTIC SERVICES OFFERED BY THE TRIBE





prevention of suicide, depression, grief, fetal alcohol syndrome, child abuse and other family issues.

Child welfare services specializes in child protection services, permanency planning, foster care and adoption. Child welfare services serves an average of **1,023** Chickasaws each month.

The violence prevention program served nearly **600** people in FY 2015 with a variety of support.



The family preservation program provided services for more than **1,000** Chickasaw families.

Recovery resource services, formally drug court support services, provided a safe, supportive structure to address the needs of **56** program participants in FY 2015.





THE SUBSTANCE ABUSE AND MENTAL HEALTH SERVICES ADMINISTRATION STATE YOUTH TREATMENT COOPERATIVE AGREEMENT **SERVED 391 PARTICIPANTS** WITH SUBSTANCE ABUSE AND MENTAL HEALTH TREATMENTS.



# GOVERNMENT



**Twenty-nine** college-aged students received valuable employment and experience through the tribe's internship program.

More than **600** youth were employed through the Toksali SMART program, formerly the summer youth program, where their interests were matched with a preferred career path.

The vocational rehabilitation department assisted **231** Native Americans with disabilities through work-related programs and services.

Vocational rehabilitation also provided job placement services to **55** individuals through its job development services program.

The Career Development Initiative (CDI) program served **130** Chickasaws who have employment barriers and assisted **60** participants in gaining full-time employment through training services.



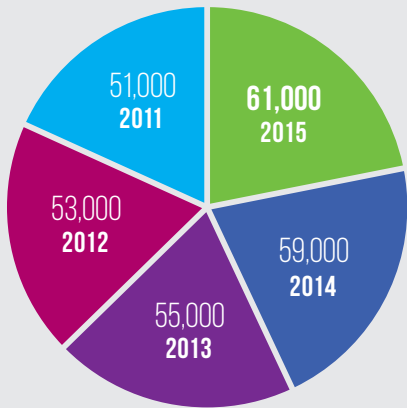
The school-to-work program employed **126** Chickasaw students who were pursuing higher educational goals, and **20** students obtained full-time employment upon graduation.

"I am thankful for Coffee and Careers. This is a hiring initiative and it helped me obtain a job with the Chickasaw Nation. It gave me a chance to interview and show I could do the job."  
**-CHICKASAW CITIZEN KRYSTEN MILLS**

The Chickasaw Leadership Academy, which provides internal employee training and career development, had **141** graduates.

The tribe's re-entry transitional employment program served **54** participants with job and life training curriculum.





THE CHICKASAW NATION HAS MORE THAN **61,000** CITIZENS WORLDWIDE.



THE TRIBE EMPLOYS NEARLY **14,000** INDIVIDUALS.



The career services program assisted **488** Chickasaw citizens with résumés, mock interviews, job skills, job fairs and other supportive services.

**Five** Chickasaw citizens received temporary employment and on-the-job training through the Chickasaw Employment Program.

The Chickasaw Nation Certificate of Degree of Indian Blood (CDIB) office issued nearly **1,400** CDIB cards to eligible individuals and more than **1,100** citizenship certificates.

# HEALTH & WELLNESS



In May 2015, the tribe broke ground on a new wellness center and health clinic expansion in Purcell.

There were more than **800** babies born this year at the CNMC.

This year, nearly **1.2 million** prescriptions were filled, with nearly **500,000** of those delivered through the mail-order service.

The Chickasaw Nation, in partnership with the Oklahoma Caring Foundation, unveiled the Caring

fruits and vegetables shipped to their homes once a month.

Also starting this year was the School Food Pantry Project, a partnership between the Chickasaw Nation, Oklahoma Regional Food Bank and **five** schools in the Chickasaw Nation.

In 2015, the CNMC became the first Indian Health Services facility to use telestroke technology, which allows a patient to attain expert neurological assessment through the use of videoconferencing.

“The wellness center has changed my lifestyle. It’s hard to lose weight, but once I got motivated it made a big difference. The trainers were nice and people would stop and encourage me. I lost 70 pounds in the last year and would like to encourage others to get your foot in the door and just try.” **-CHICKASAW CITIZEN CYNTHIA MURPHY**

Van, a mobile health care unit serving the many citizens living in remote, rural areas.

In April 2015, the tribe partnered with the USDA for the Healthy Meals for Kids program to provide a healthy meal to any child visiting the CNMC.

The Chickasaw Nation Nutrition Services was one of five organizations nationwide to be awarded the first Healthy Hunger-Free Kids Act grant in 2015. Qualified children will receive a box of shelf-stable food and a **\$15** Fresh Check to purchase fresh

The Chikasha House has assisted more than **400** Chickasaw families visiting long-term patients of the medical center since opening its doors in July 2013.

The tribe’s imaging department had an all-time high number of MRI exams in FY 2015, with more than **3,000** MRI exams administered.

The tribe’s dental department had more than **40,000** visits. Optometry had more than **12,000**



patient visits, and audiology had more than **4,500** patient visits.

In 2014, the tribe implemented a spouse prescription and mail order service for non-Native spouses of Chickasaws. Since then, the program has had more than **3,900** patients.

Sovereign Medical Clinics in Ada and Norman recorded approximately **20,000** combined patient visits in 2015.

The physical therapy department saw more than **12,000** patient visits in 2015.

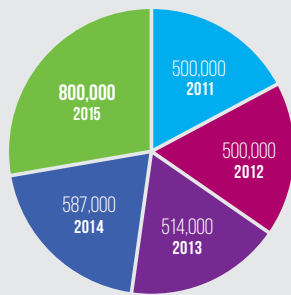
More than **800** Chickasaw families are served each month through the tribe's eight Women, Infants and Children (WIC) program locations.

The summer food program expanded to **31** sites throughout south-central Oklahoma, distributing more than **30,000** nutritious meals to children during summer 2015.

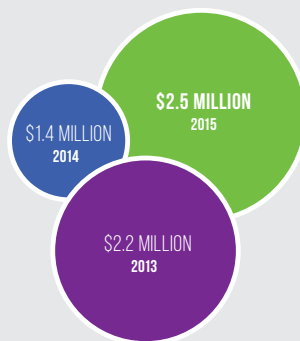
The Summer Electronic Benefit Transfer (EBT) for Children project provided more than **12,000** students in **57** Oklahoma Public School Districts

with nutritious food benefits packages during the summer months.

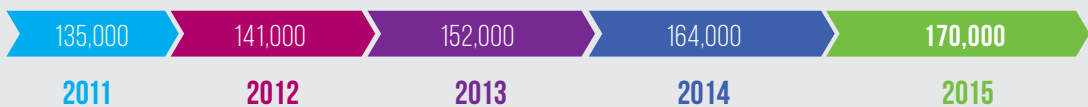
The Farmers' Market Nutrition Program distributed more than **\$500,000** to Chickasaw families for the purchase of fruits and vegetables from more than **140** contracted local farmers.



THERE WERE MORE THAN **800,000** PATIENT VISITS THIS YEAR AT THE CHICKASAW NATION MEDICAL CENTER (CNMC) AND OUTLYING CLINICS, INCLUDING 1,250 NEW PATIENTS.

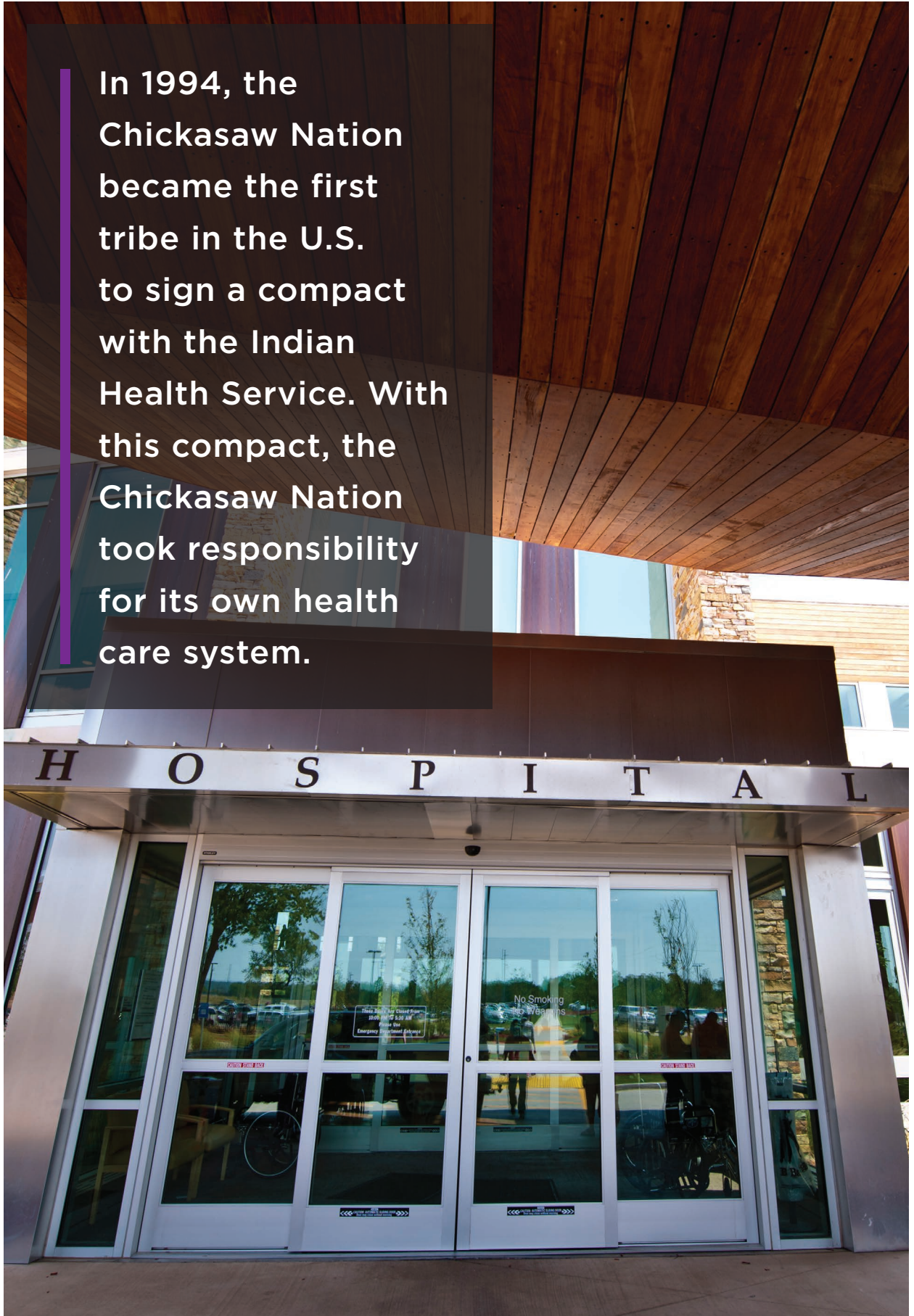


THE FOOD DISTRIBUTION PROGRAM DISTRIBUTED NEARLY **\$2.5 MILLION** WORTH OF FOOD TO FAMILIES.



MORE THAN **170,000** PEOPLE PARTICIPATED IN ACTIVITIES THIS YEAR AT THE WELLNESS CENTERS IN ADA, ARDMORE AND TISHOMINGO.

In 1994, the Chickasaw Nation became the first tribe in the U.S. to sign a compact with the Indian Health Service. With this compact, the Chickasaw Nation took responsibility for its own health care system.







THE TRIBE CELEBRATED THE  
**20<sup>TH</sup> ANNIVERSARY** OF THE  
CHICKASAW NATION HEALTH  
SYSTEM IN FY 2015.





# HOUSING



Nearly **800** Chickasaw families are participating in the tribe's homeowners' program.

Housing management services assisted **949** Chickasaw families through two home rental programs.

The Chickasaw Nation installed **728** storm shelters in FY 2015 and nearly **4,000** since the program began in 2003.

Through the tribe's home improvement grant, **447** Chickasaws received a one-time **\$5,000** grant toward home improvements. Additionally, **12** citizens received a grant to install handicap accessible updates.

The Chickasaw Housing Improvement Program (CHIP) Minor assisted **23** Chickasaw families with a grant of up to **\$5,000** for the repair or rehabilitation of their privately-owned homes.

Housing maintenance services completed more than **4,000** work orders in FY 2015 for Native American-owned homes.

The home maintenance program completed more than **1,500** small home repairs or alterations for **750** Chickasaw elders.

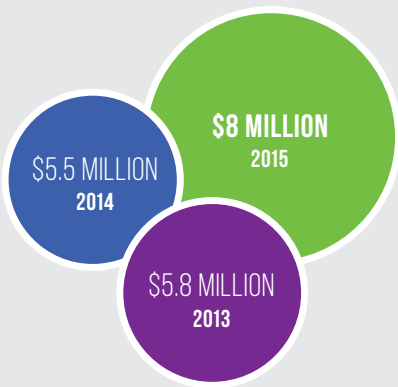
The Chickasaw Nation assisted **42** Chickasaw elders and families with special needs with the repair or construction of private driveways.

Chickasaw Housing Improvement Services completed renovations on **26** low-income housing units.

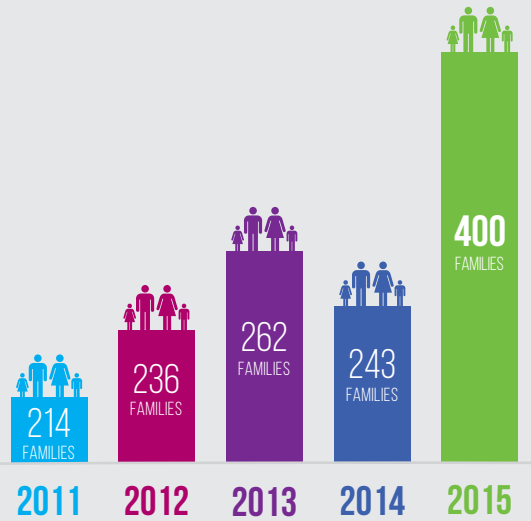
Chickasaw Farms harvested and distributed more than **470,000** square feet of sod for Chickasaw homeowners.

"The storm shelter program is a great opportunity for Chickasaw citizens to feel safe during the storm seasons. I am extremely grateful to the Chickasaw Nation for providing my family with a feeling of security at our home." -CHICKASAW CITIZEN JOSH DAVIS





NEARLY **\$8 MILLION** IN FUNDING WAS ISSUED TO 57 CHICKASAW FAMILIES THROUGH THE CHUKA CHUKMASI (BEAUTIFUL HOME) LOAN PROGRAM.



THIS YEAR, MORE THAN **\$1.1 MILLION** IN DOWN PAYMENT AND CLOSING COST ASSISTANCE WAS AWARDED TO NEARLY 400 CHICKASAW FAMILIES.





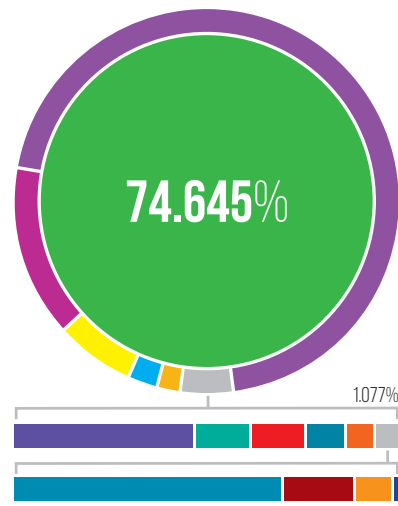
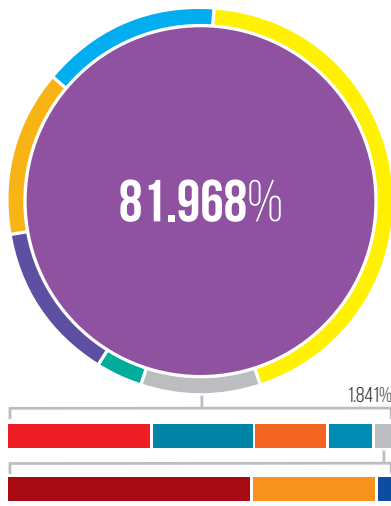


**CHICKASAW FARMS** PROVIDED 171  
INITIAL LANDSCAPING PACKAGES AND  
**147 SUPPLEMENTAL PACKAGES** TO 318  
CHICKASAW HOMEOWNERS.









## PROGRAM REVENUES

## TOTAL REVENUES

Health	\$227,076,356	81.968%
Housing	21,791,273	7.866%
Education	7,550,591	2.726%
Social services	6,886,348	2.486%
Transportation	6,660,879	2.404%
Legal	1,965,648	0.710%
General government	1,941,139	0.701%
Judiciary	1,366,913	0.493%
Museums	965,389	0.348%
Public safety and defense	588,275	0.212%
Aging services	152,232	0.055%
Natural resources	76,961	0.028%
Regulatory services	8,944	0.003%
<b>Total Revenues</b>	<b>\$277,030,948</b>	<b>100.000%</b>

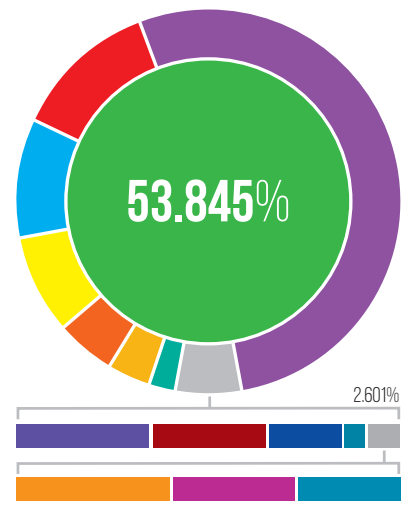
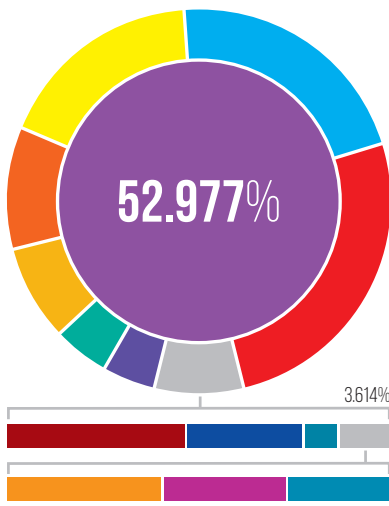
Business-type activities	\$951,464,233	74.645%
Health	227,076,356	17.815%
General revenues	46,149,440	3.621%
Housing	21,791,273	1.710%
Education	7,550,591	0.592%
Social services	6,886,348	0.540%
Transportation	6,660,879	0.523%
Legal	1,965,648	0.154%
General government	1,941,139	0.152%
Judiciary	1,366,913	0.107%
Museums	965,389	0.076%
Public safety and defense	588,275	0.046%
Aging services	152,232	0.012%
Natural resources	76,961	0.006%
Regulatory services	8,944	0.001%
<b>Total Revenues</b>	<b>\$1,274,644,621</b>	<b>100.000%</b>

## CHICKASAW NATION COMPARATIVE STATEMENT OF NET ASSETS

ASSETS	2015*	2014*	2013*	2012*	2011*	2010*
Cash and cash equivalents	\$522,668,542	\$456,136,771	\$386,776,997	\$427,263,762	\$445,077,066	\$370,738,346
Investments	903,583,967	785,365,301	603,643,324	274,923,379	160,722,759	183,842,835
Accounts and notes receivable	119,186,939	111,351,533	104,897,836	173,302,076	97,487,773	95,750,326
Inventory	10,953,022	12,347,691	10,589,468	9,977,915	9,599,307	8,016,377
Capital assets	1,067,283,309	1,047,624,761	1,027,921,054	1,042,456,332	941,736,948	832,630,420
Other assets	75,534,949	89,455,012	87,108,860	96,671,746	96,479,554	84,698,037
<b>Total Assets</b>	<b>\$2,699,210,728</b>	<b>\$2,502,281,069</b>	<b>\$2,220,937,539</b>	<b>\$2,024,595,210</b>	<b>\$1,751,103,407</b>	<b>\$1,575,676,341</b>
LIABILITIES						
Accounts payable and accrued expenses	\$116,296,402	\$119,057,500	\$111,564,139	\$118,348,196	\$92,939,480	\$86,001,697
Trust and deposit liabilities	55,054	11,149,453	11,177,514	11,298,926	10,728,386	10,542,484
Other current liabilities	45,333,603	43,800,838	251,868	312,042	274,132	325,727
Deferred revenue	52,136,278	49,911,455	64,820,662	62,582,304	39,170,874	39,505,360
Long-term liabilities	12,100,000	14,455,000	87,888,655	173,528,267	183,299,155	205,632,645
<b>Total Liabilities</b>	<b>\$225,921,337</b>	<b>\$238,374,246</b>	<b>\$275,702,838</b>	<b>\$366,069,735</b>	<b>\$326,412,027</b>	<b>\$342,007,913</b>
<b>NET ASSETS</b>	<b>\$2,473,289,391</b>	<b>\$2,263,906,823</b>	<b>\$1,945,234,701</b>	<b>\$1,658,525,475</b>	<b>\$1,424,691,380</b>	<b>\$1,233,668,428</b>

\* The Chickasaw Nation has implemented Governmental Accounting Standards Board Statement No. 34, Basic Financial Statements - and Management's Discussion and Analysis - for State and Local Governments. Statement 34 changes our method of recording and reporting our fixed assets. In the past, when the nation purchased a fixed asset it was shown as an expenditure in the current year. Now the purchase is shown in the balance sheet as a capital asset and depreciated over its useful life.





## PROGRAM EXPENDITURES

Health	\$237,556,777	52.977%
General government	54,607,523	12.178%
Education	45,068,725	10.051%
Housing	37,124,812	8.279%
Museums	21,794,635	4.860%
Social services	16,671,479	3.718%
Legal	10,321,329	2.302%
Transportation	9,068,600	2.022%
Aging services	7,681,775	1.713%
Regulatory services	4,978,550	1.110%
Judiciary	1,365,431	0.304%
Natural resources	886,029	0.198%
Other	702,714	0.157%
Public safety and defense	589,258	0.131%
<b>Total Expenditures</b>	<b>\$448,417,637</b>	<b>100.000%</b>

## TOTAL EXPENDITURES

Business-type activities	\$523,137,108	53.845%
Health	237,556,777	24.451%
General government	54,607,523	5.621%
Education	45,068,725	4.639%
Housing	37,124,812	3.821%
Museums	21,794,635	2.243%
Social services	16,671,479	1.716%
Legal	10,321,329	1.062%
Transportation	9,068,600	0.933%
Aging services	7,681,775	0.791%
Regulatory services	4,978,550	0.512%
Judiciary	1,365,431	0.141%
Natural resources	886,029	0.091%
Other	702,714	0.072%
Public safety and defense	589,258	0.061%
<b>Total Expenditures</b>	<b>\$971,554,745</b>	<b>100.000%</b>

## CHICKASAW NATION COMPARATIVE STATEMENT OF NET ASSETS (continued)

ASSETS	2007* <sup>^</sup>	2003*	1999	1995	1991	1987
Cash and cash equivalents	\$261,142,708	\$44,110,100	\$21,382,840	\$8,390,315	\$2,676,018	\$1,475,745
Investments	135,492,638	83,051,961	12,548,410	10,808,494	2,377,124	456,067
Accounts and notes receivable	33,410,225	10,866,857	34,522,723	12,223,018	5,492,809	2,955,034
Inventory	5,756,908	4,423,512	2,946,081	1,354,260	622,463	101,274
Capital assets	491,909,941	160,551,121	64,169,108	22,254,896	11,044,786	7,624,301
Other assets	82,438,273	3,533,497	4,448,349	3,338,548	175,647	164,707
<b>Total Assets</b>	<b>\$1,010,150,693</b>	<b>\$306,537,048</b>	<b>\$140,017,511</b>	<b>\$58,379,531</b>	<b>\$22,388,847</b>	<b>\$12,777,128</b>

LIABILITIES	2007* <sup>^</sup>	2003*	1999	1995	1991	1987
Accounts payable and accrued expenses	\$42,598,705	\$30,340,503	\$15,469,160	\$7,835,065	\$2,113,361	\$732,860
Trust and deposit liabilities	8,462,583	6,233,612	-	-	-	-
Other current liabilities	248,217	195,938	857,191	254,696	117,844	-
Deferred revenue	56,727,826	23,157,248	22,734,254	5,843,206	4,777,146	2,649,411
Long-term liabilities	117,621,901	3,726,733	6,315,839	11,482,758	734,463	115,135
<b>Total Liabilities</b>	<b>\$225,659,232</b>	<b>\$63,654,034</b>	<b>\$45,376,444</b>	<b>\$25,415,725</b>	<b>\$7,742,814</b>	<b>\$3,497,406</b>

<b>NET ASSETS</b>	<b>\$784,491,461</b>	<b>\$242,883,014</b>	<b>\$94,641,067</b>	<b>\$32,963,806</b>	<b>\$14,646,033</b>	<b>\$9,279,722</b>
-------------------	----------------------	----------------------	---------------------	---------------------	---------------------	--------------------

<sup>^</sup> In 2007, the Chickasaw Housing Authority received guidance from the Department of Housing and Urban Development regarding the treatment of Mutual Help housing units. This guidance states that such units should be recorded as other assets, rather than as capital assets on the balance sheet until the property is ultimately conveyed. This restatement resulted in a decrease to capital assets and an increase to other assets of \$67,566,147.

# IMPORTANT NUMBERS



## AREA OFFICES

Ada Area Office . . . . .	580.436.7256
Ardmore Area Office . . . . .	580.226.4821
Duncan Area Office . . . . .	580.470.2131
Oklahoma City Area Office . . . . .	405.767.8971
Pauls Valley Satellite Office . . . . .	405.207.9883
Purcell Area Office . . . . .	405.527.4973
Sulphur Area Office . . . . .	580.622.2888
Tishomingo Area Office . . . . .	580.371.9512

## HEALTH CLINICS

Ada . . . . .	800.851.9136
Ardmore . . . . .	877.242.4347
Purcell . . . . .	877.584.3289
Tishomingo . . . . .	877.240.2720

## OTHER IMPORTANT NUMBERS

Bureau of Indian Affairs Chickasaw Agency . . . . .	580.436.0784
Chickasaw Lighthorse Police Department . . . . .	580.436.7213
Chickasaw Nation Medical Center . . . . .	580.436.3980

## TRIBAL GOVERNMENT & ADMINISTRATIVE OFFICES

Chickasaw Nation Headquarters . . . . .	580.436.2603
Chickasaw Tribal Legislature . . . . .	580.436.1460
Chickasaw Nation Supreme Court . . . . .	580.235.0281
Chickasaw Nation District Court . . . . .	580.235.0279







**BILL ANOATUBBY, GOVERNOR  
COPYRIGHT 2015 THE CHICKASAW NATION**

The Great "Unconquered and  
Unconquerable" Chickasaw Nation.  
Unauthorized reproduction is a violation of  
applicable laws. Printed in the U.S.A.